


FAST AND EASY STEM CLIPPING

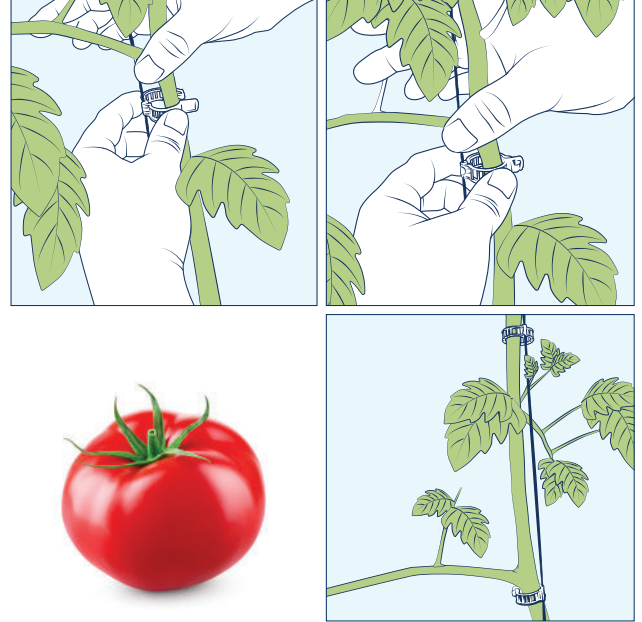
Optima Family of Clips: 550kc-12, 550kcT-12 , 552kc-10

Growing crops in a trellising system present some challenges to the growers, including ensuring plants grow healthily and upward without falling and with strong grip support. In addition, it allows time and labor savings while treating the plants in the most effective and efficient way.

Specially designed to ensure a strong gripping force, Paskal Tomato Clips significantly help reduce labor costs by connecting the plants to the trellising twine in a simple click, ensuring that the clip is well fastened.

Advantages

- The clip is attached to the twine while surrounding the stem
- Easy and fast installing and removal – prevents damage to the stem
- Eliminates the slow and potentially stem-breaking method of twisting the plant around the trellising twine
- Specially designed to ensure a strong gripping force
- “Click” sound system to signal correct fastening and locking
- Time and labor cost savings (average of 1,400 clips per hour)
- Upgraded design to minimize fruit damage: smooth edges and air holes around the clip to prevent fungus formation
- The ribs on the sides prevent finger slippage and ache while closing
- Available in different colors
- Biodegradable option 



Instructions for use

- Hold the clip open with your fingers
- Place the twine inside with the other hand (30 cm from base)
- Close the clip on the twine
- Recommended distance between two clips is about 20 cm
- Place clips below leaves
- Use 10-20 clips per plant for long-term growth; 5-10 clips per plant for short-term growth

